

# CENTURYTEL

RECEIVED

2008 AUG -4 PM 3: 30

IDAHO PUBLIC  
UTILITIES COMMISSION

CEN-T-08-01

July 31, 2008

Ms. Jean D. Jewell  
Secretary  
Idaho Public Utilities Commission  
P.O. Box 83720  
Boise, Idaho 83720-0074

Dear Ms. Jewell:

Enclosed is the application of CenturyTel of Idaho, Inc. for the broadband tax credit for 2007. This application is being submitted for Commission determination that the broadband equipment installed in 2007 meets the definition of qualified broadband equipment as found in Idaho Code 63-3029I.

**1. Name and address of the applicant:**

CenturyTel of Idaho, Inc.  
100 CenturyTel Drive  
Monroe, LA 71203

**Contact person:**

Jon Robinson, Vice-President Tax  
Email [Jon.Robinson@CenturyTel.com](mailto:Jon.Robinson@CenturyTel.com)  
Phone 318-330-6261

CenturyTel of Idaho, Inc. is a telecommunications carrier.

**2. Identify the area or location where the equipment is installed in Idaho.**

Please refer to Exhibit 1.

**3. Type of broadband service offered to the public in Idaho.**

Asymmetrical Digital Subscriber Line (ADSL)

**4. Network transmission rate:**

The transmission rate of DSL equipment installed in Idaho ranges from 1MBPS to a subscriber and 125 KBPS from a subscriber.

5. **Provide a specific list of the equipment types that the application is requesting the Commission to determine is “qualified broadband equipment” as defined in Idaho Code 63-3029I. Include brand, manufacturer, model numbers and or, other distinguishing features of the installed equipment. Please refer to Exhibit 1.**
6. **Installation dates:** Please refer to Exhibit 1.
7. **Written description with basic schematic drawings of relevant broadband network including a description of how the installed equipment is an “integral part” of the broadband network. Please refer to Exhibit 2.**
8. **Percentage and number of potential subscribers:**  
2007 Idaho-3,495 customers, or 64%; Non-Idaho: 0 customers or 0%.
9. **Certified statement from applicant:**  
Please refer to Exhibit 3.

If you have any questions concerning this filing, please contact me at (318) 330-6261

Sincerely,



Jon Robinson  
Vice-President Tax

CenturyTel of Idaho  
 Qualified Broadband Equipment  
 Deployed in 2007

Exhibit No. 1

Exchange/Location	Installation Date	Part Number	Equipment Details	Cost	WO#
North Fork Lower 4th of July	6/11/2007	1179641L1 1179821L2	Calix TA1248 Host 48 Port TA1200 Protector Cable	\$5,995.00	E:131427C
North Fork	3/28/2007		Elk Mtn Ranch 1.2 Miles Copper Cable	\$2,945.00	E:128304C
North Fork	8/21/2007		Subdivision Elk Mtn Ranch 1.1 Miles Copper Cable	\$14,876.00	E:133533C
North Fork	8/22/2007		4th July Chariton .2 Miles Copper Cable	\$5,796.00	E:135207C
North Fork	12/26/2007		4th July Drive Road .2 Miles Copper Cable	\$4,928.00	E:145045C
Leadore	4/16/2007	1179641L1 1179821L2	Adtran TA1248 Host 48 Port TA1200 Protector Cable	\$5,995.00	E:131427C
Leadore	10/30/2007	92-031902-C D1M-1A0009	HDSL Span Shelf & Repeaters RPTR SHELF CO 92-031902-C 84 Pos PNL DS1 FX CKT WW-WW	\$10,863.78	E:133837C
Leadore	6/13/2007		Hwy 28 Big Timber Creek .1 Miles Copper Cable	\$5,453.00	E:132347C
Leadore	10/10/2007		Peterson Weld .1 Miles Copper Cable	\$5,466.00	E:131658C
Salmon	3/28/2007		Alder Lane Sub Foley	\$14,531.00	E:130282C

CenturyTel of Idaho  
 Qualified Broadband Equipment  
 Deployed in 2007

Exhibit No. 1

Salmon	Salmon	8/22/2007	.7 Miles Copper Cable	\$6,949.00	E.134328C
Salmon	Salmon	10/11/2007	Salmon Helipad .2 Miles Copper Cable	\$1,492.00	E.135334C
Salmon	Salmon	12/26/2007	H93 Lemhi Feed .1 Miles Copper Cable	\$7,115.00	E.143069C
Salmon	Salmon	8/22/2007	Brooklyn School to Courthouse .4 Miles Fiber	\$3,020.00	E.136285C
Salmon	Salmon	10/11/2007	Catherine Lane .1 Miles Copper Cable	\$5,422.00	E.136527C
Salmon	Salmon	12/21/2007	Hwy 93 Nichols .1 Miles Copper Cable	\$13,080.00	E.136674C
Salmon	Salmon	6/26/2007	Porphry Street .2 Miles Copper Cable	\$24,374.00	E.143598
Salmon	Salmon	12/26/2007	Black Hawk Subdivision .2 Miles Copper Cable	\$4,562.00	E.144922C
Salmon	Hammondville Hammondville	8/10/2007	Simms Ranch Road .1 Miles Copper Cable	\$5,120.00	E.131427C
Salmon	Salmon	11/20/2007	Adtran TA1248 Client 48 Port TA1200 Protector Cable	\$28,490.62	E.994083C
			HDSL Span Shelf & Repeaters RPTR SHELF CO 92-031902-C		

CenturyTel of Idaho  
 Qualified Broadband Equipment  
 Deployed in 2007

Exhibit No. 1

Salmon	Salmon	8/9/2007	D1M-1A0009	84 Pos PNL DS1 FX CKT WW-WWV	\$18,378.00	E.123503
Salmon	Salmon	8/9/2007	HVAC	Salmon HVAC HVAC	\$18,378.00	E.123503
Salmon	Baker Baker	9/13/2007	1179641L1 1179821L2	Adtran TA1248 Host 48 Port TA1200 Protector Cable	\$5,120.00	E.131427C
Salmon	Cemetery	10/12/2007	0110-0247	AFC ADSL2+ 6+6	\$4,574.00	E.131427C
Salmon	Fairgrounds	10/12/2007	0110-0247	AFC ADSL2+ 6+6	\$4,573.00	E.131427C

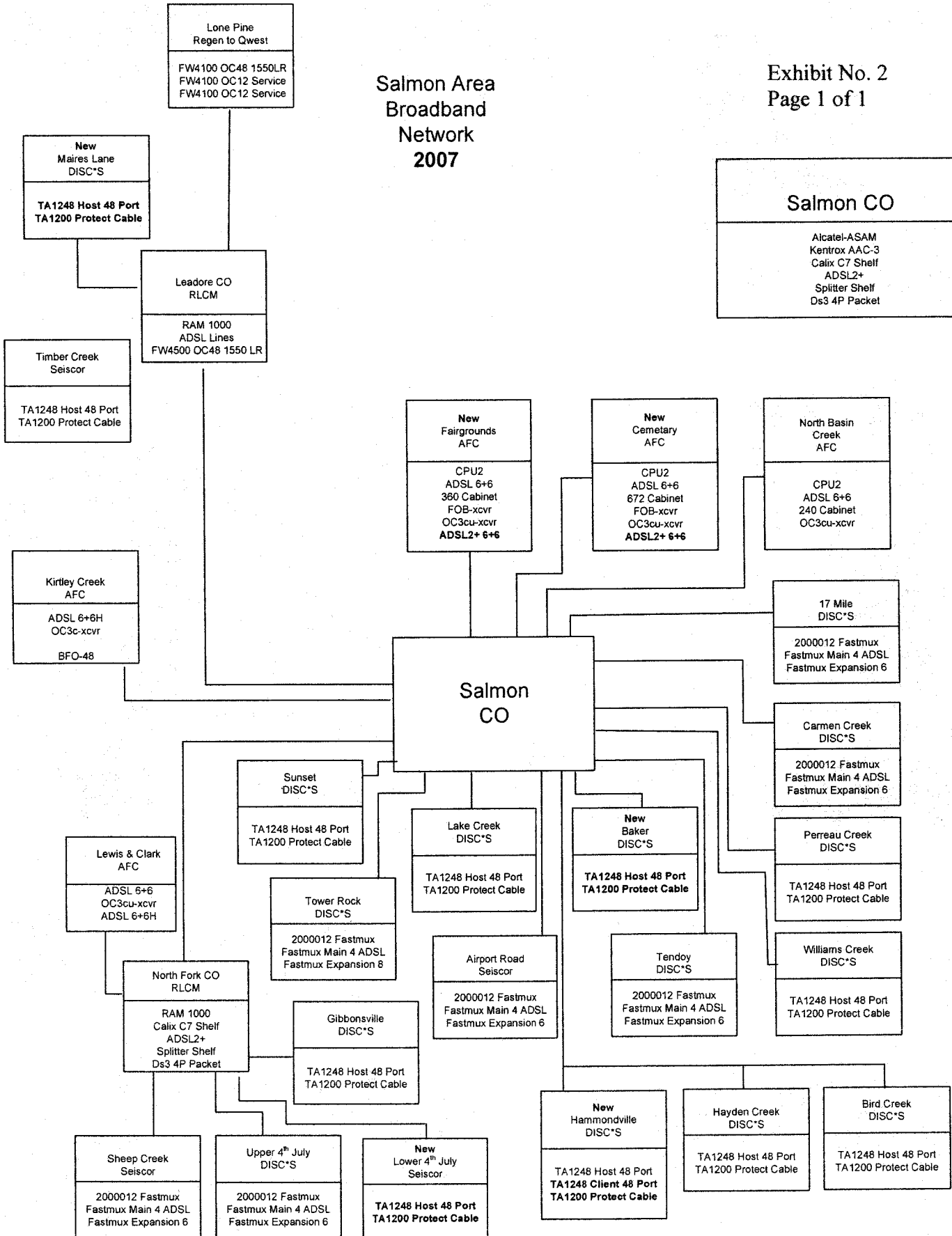
Total Capital Expenditures on Broadband Equipment for 2007

\$209,118.40

# Salmon Area Broadband Network 2007

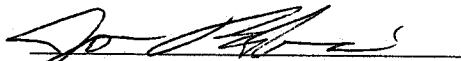
Exhibit No. 2  
Page 1 of 1

<b>Salmon CO</b>
Alcatel-ASAM Kentrox AAC-3 Calix C7 Shelf ADSL2+ Splitter Shelf Ds3 4P Packet



**Idaho Broadband Certification  
Exhibit 3**

I hereby certify that representatives of CenturyTel of Idaho, Inc. (the applicant) have read the applicable statutes for broadband investment income tax credit and the applicant believes that the subject broadband equipment qualifies for the tax credit under Idaho Code 63-3029I.

  
Jon Robinson  
Vice-President Tax